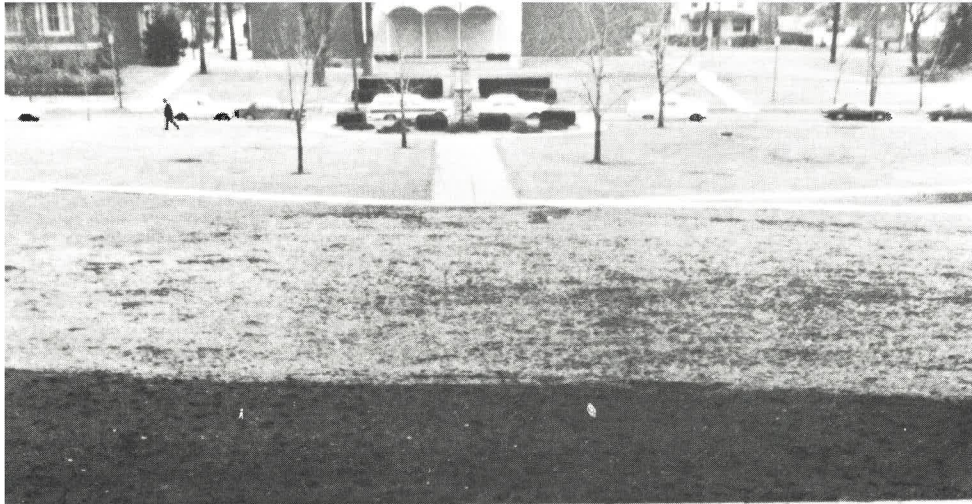


THE
ILLINOIS
WESLEYAN
UNIVERSITY
LIBRARY

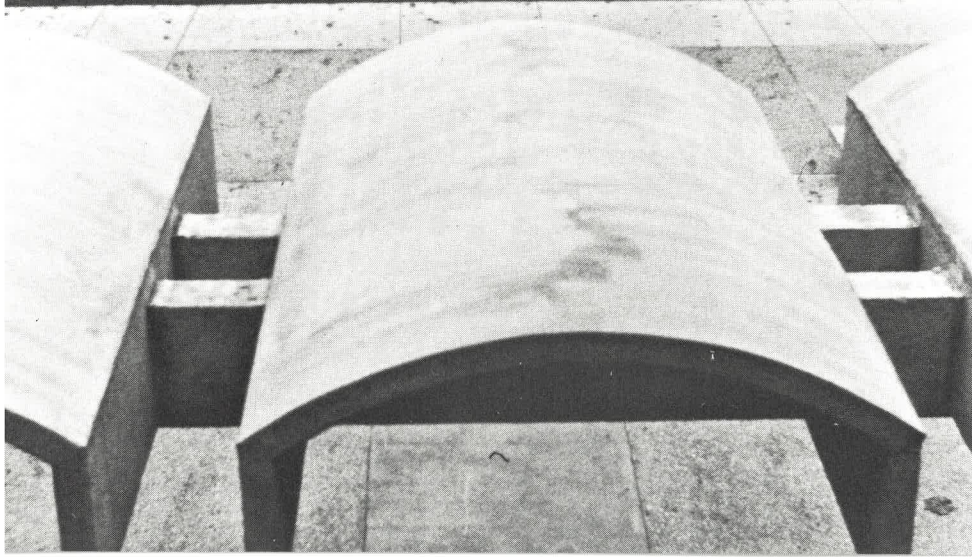


UNUSUAL

That's Illinois Wesleyan University's Library . . .



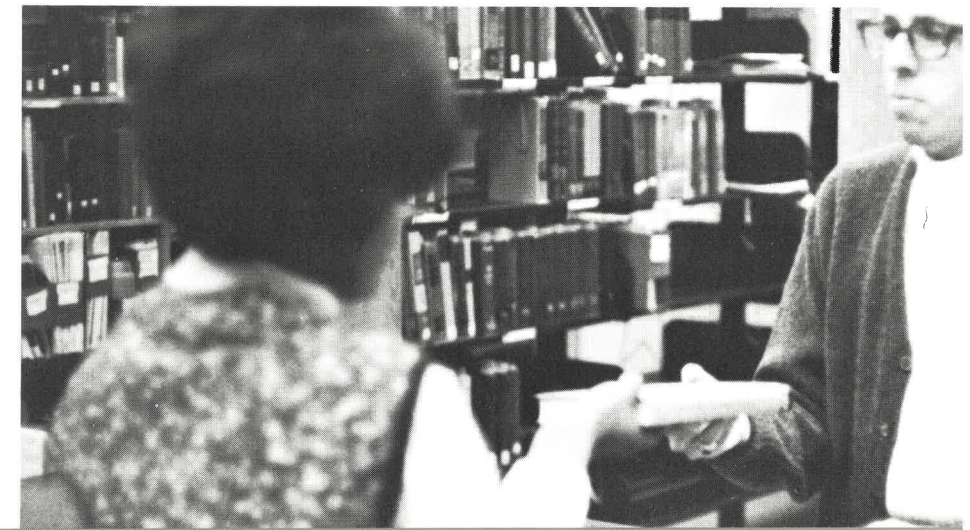
ACCESSIBLE

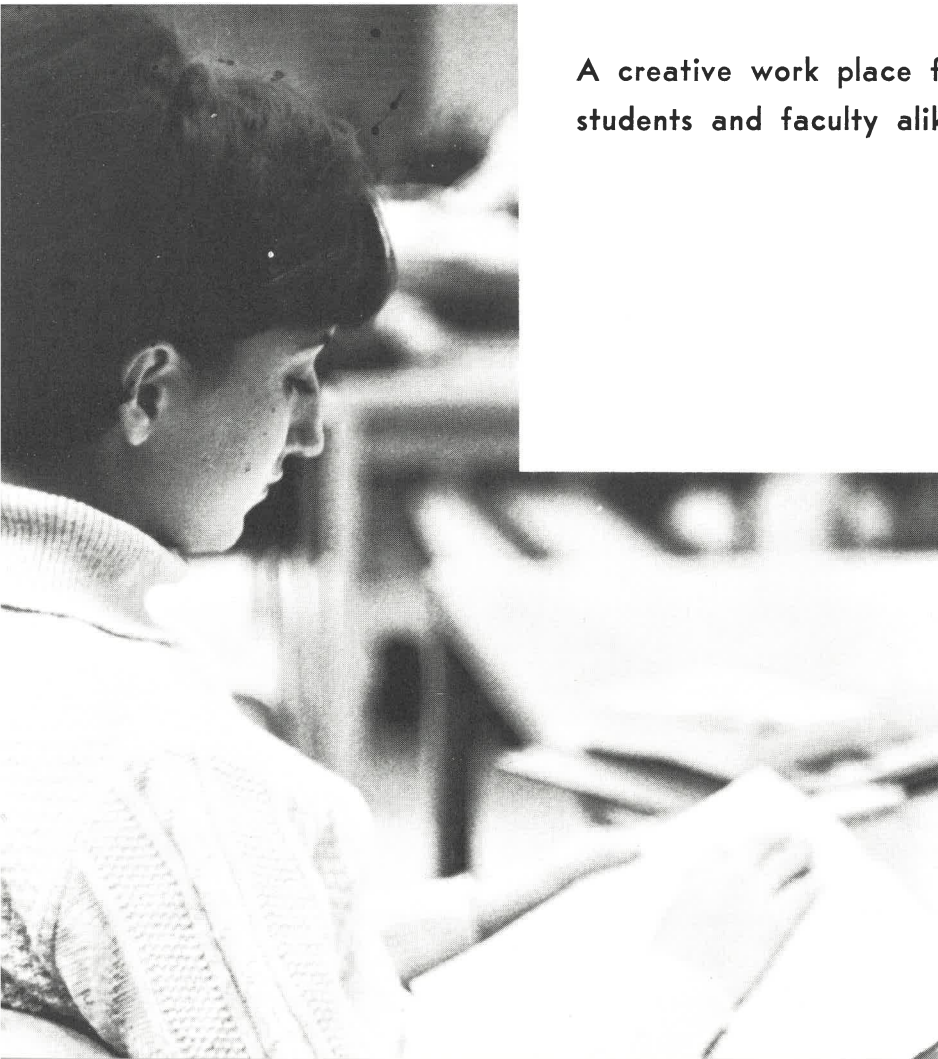


CONSIDERATE

In the
center
of the
Campus . . .

That's the word for The Library's people





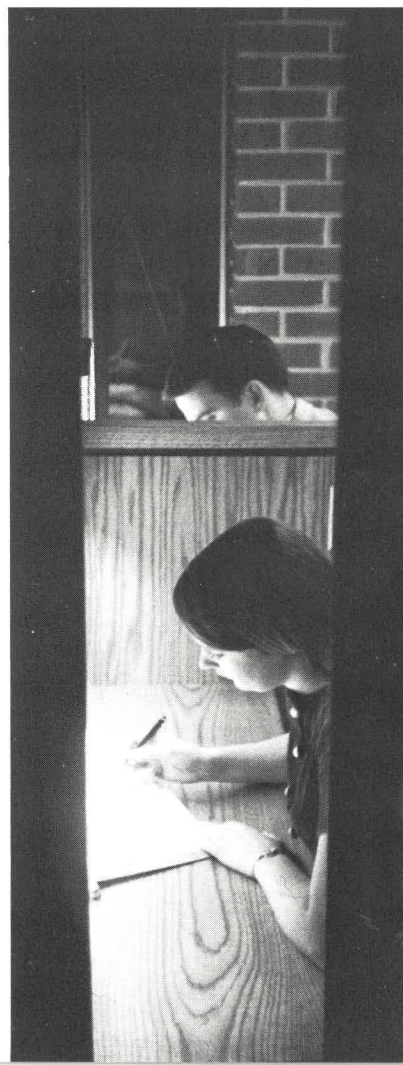
A creative work place for
students and faculty alike.

The outgrowth of a
provocative Academic
Program . . .

The Wesleyan Library is designed for scholars to use.
Each person, in his studies, cuts across disciplines



each person
concentrates
on one field.

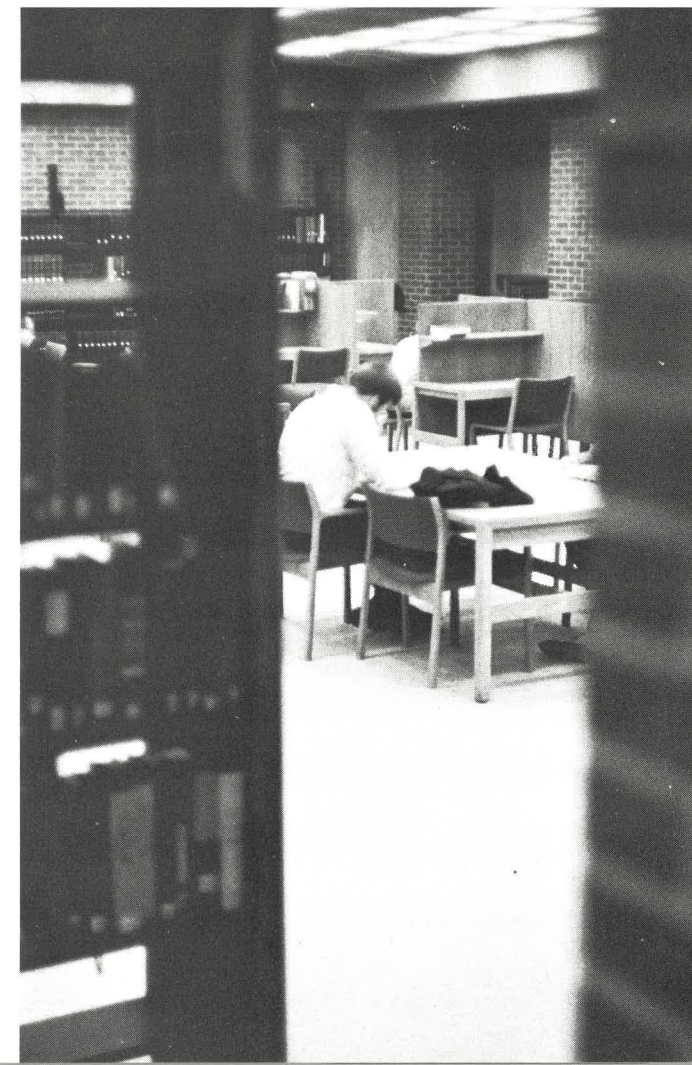


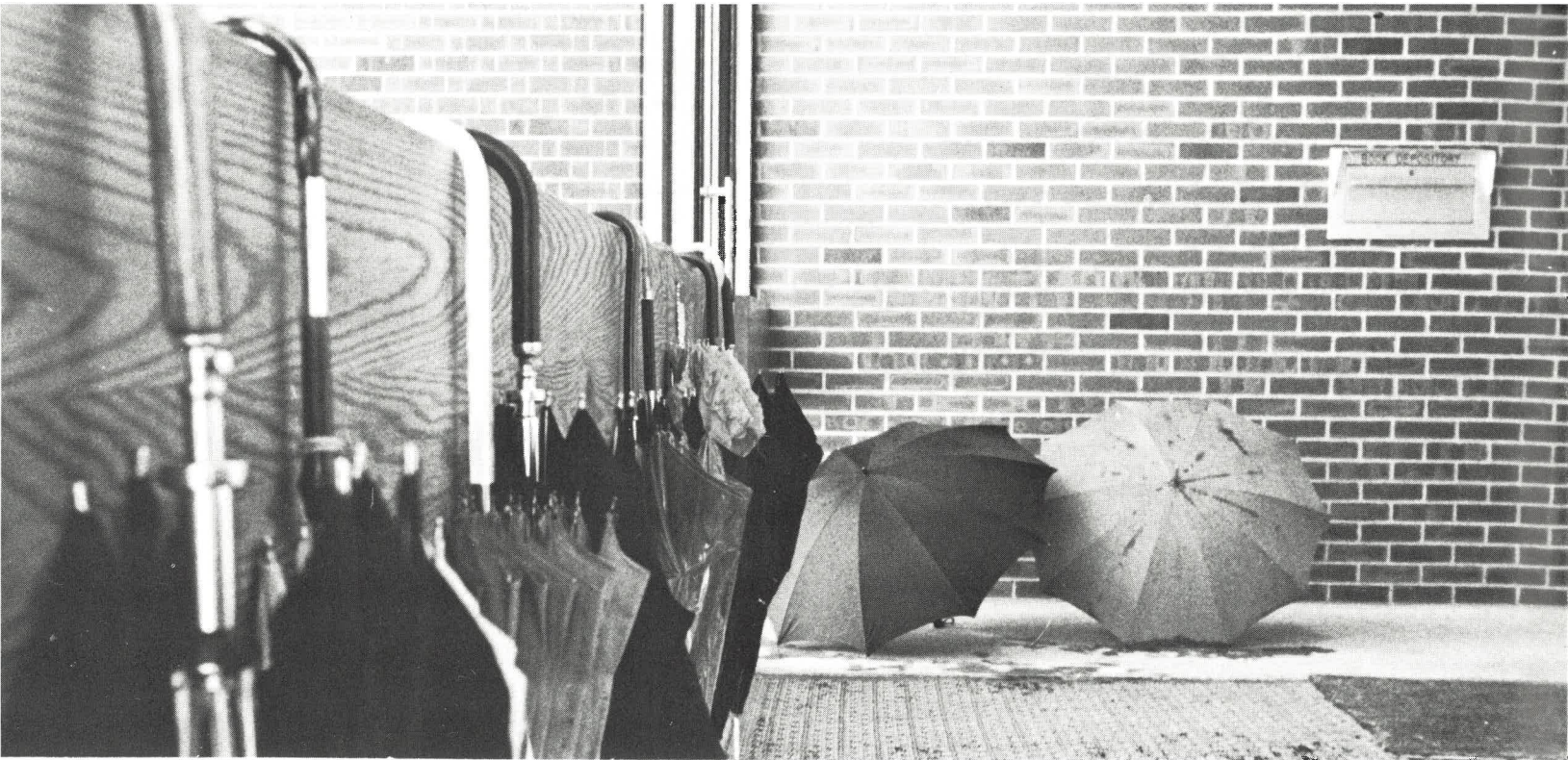
The Illinois Wesleyan
University Program
recognizes this principle.

The Library
strengthens the commitment.

The quadrant design provides
in-depth resources
in a multitude of
specialized fields.

Is your assignment in
Psychology?
Fine.
The Library's at your service.



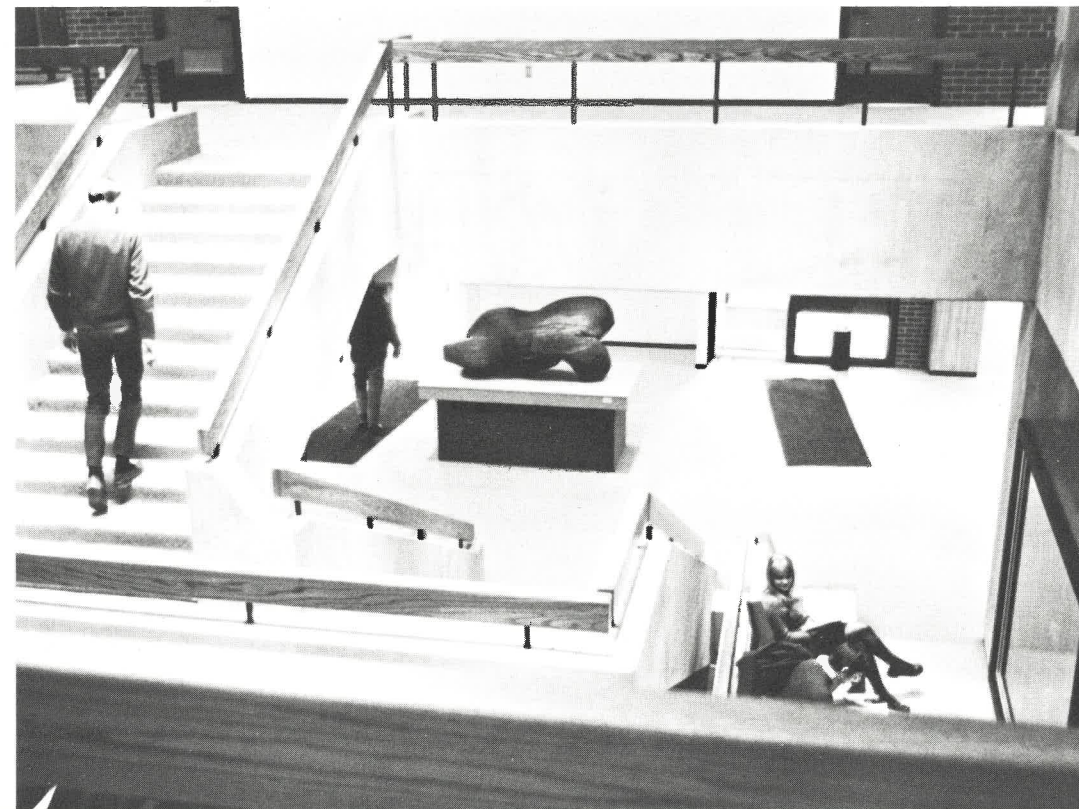


Rainy Day?

Wet Umbrella?

A great time to be innovative . . . like Illinois Wesleyan.

In a hurry? Too bad.
Catch it on your way around



Up,
Down,
It
gets
to
you . . .

Check the floor plan;
seek for yourself.



Books.
Government Documents . . .



Book stacks on the outside isolate the reading rooms from
traffic patterns.

Take your choice:
do you work best

off by yourself

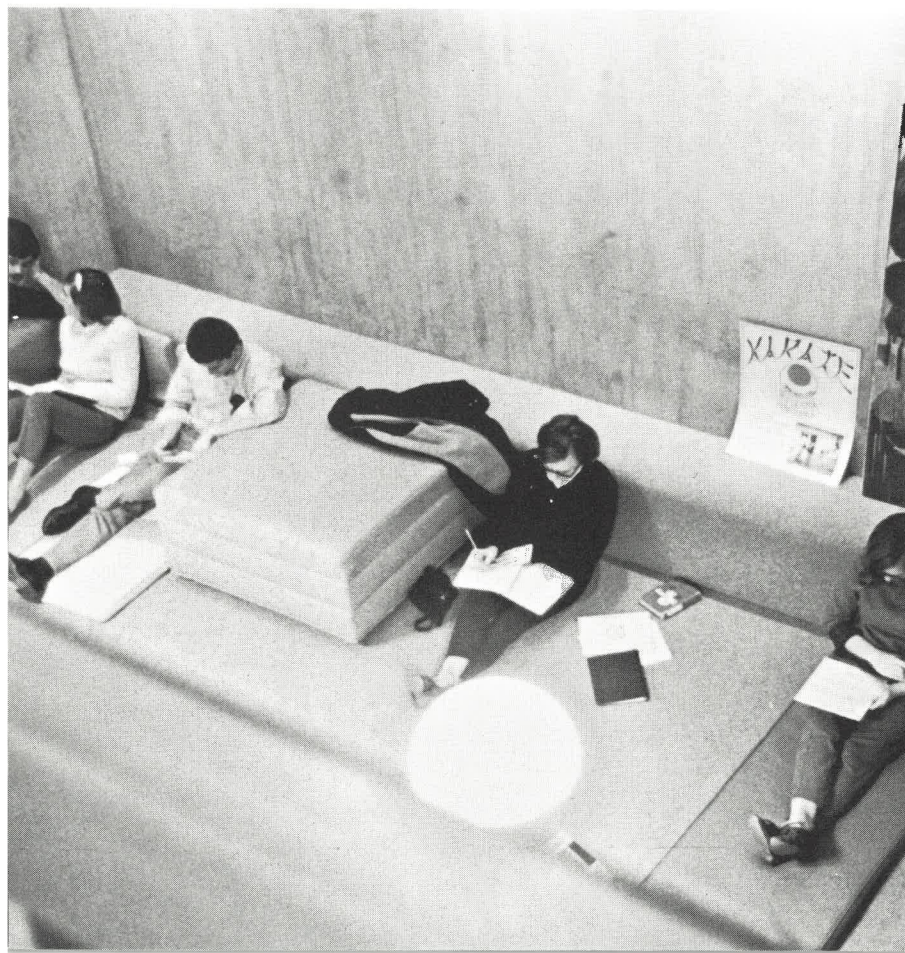


... or in a group situation?

There's even
room
in the
aisles...



... the special
lounges
color-cued
for
you.



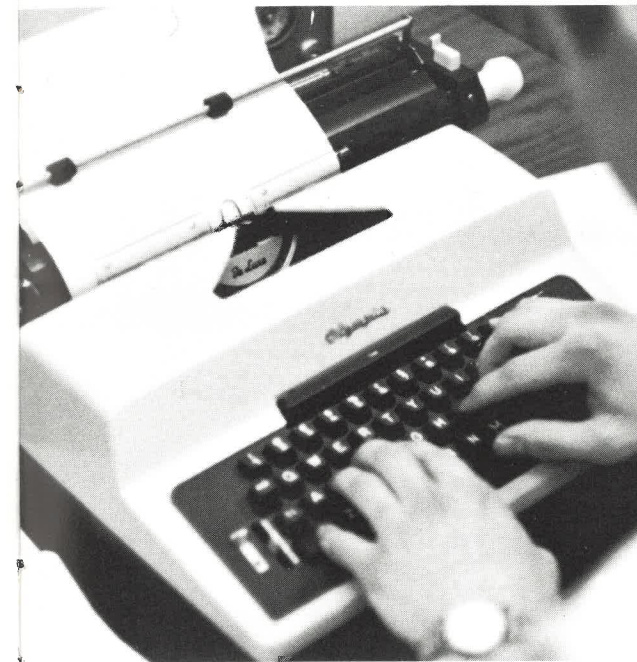
The Pit . . .

Is your reference on micro-film?
Use the Micro Center on the first floor.





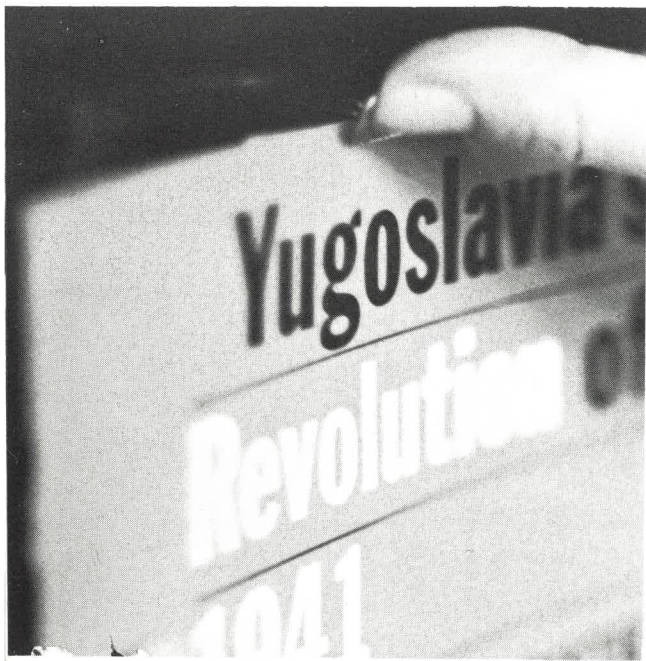
Is your reference recorded?
special listening rooms are on floors one and two.



Does your report need typing?
Don't drag a dozen books
across Campus.

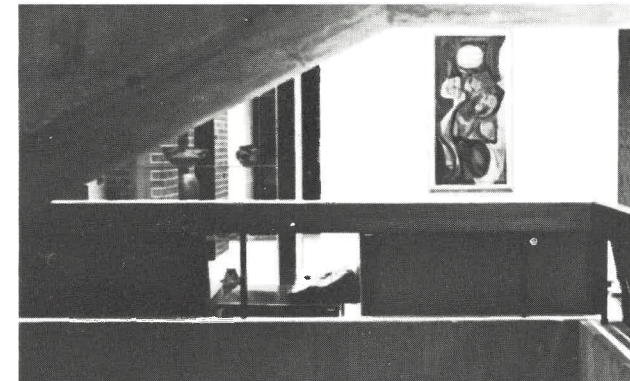
Bring your own typewriter, or
rent an electric in rooms
specially set aside.
There's even a calculator room.

It seems as though the designers thought of everything . . .

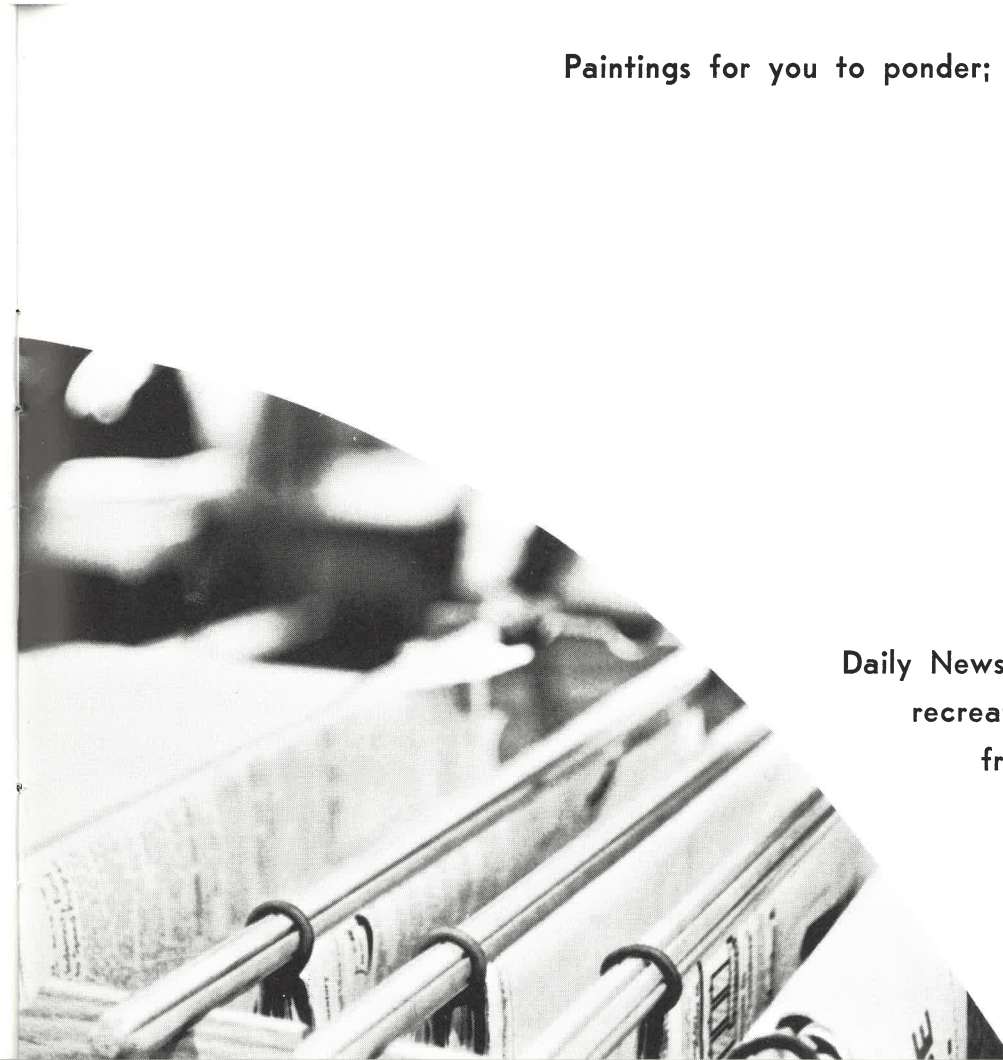


. . . Bulletin Boards
for posters and notes;

Paintings for you to ponder;



Daily Newspapers hanging in readiness
recreational reading
from Cartoons to Columns . . .

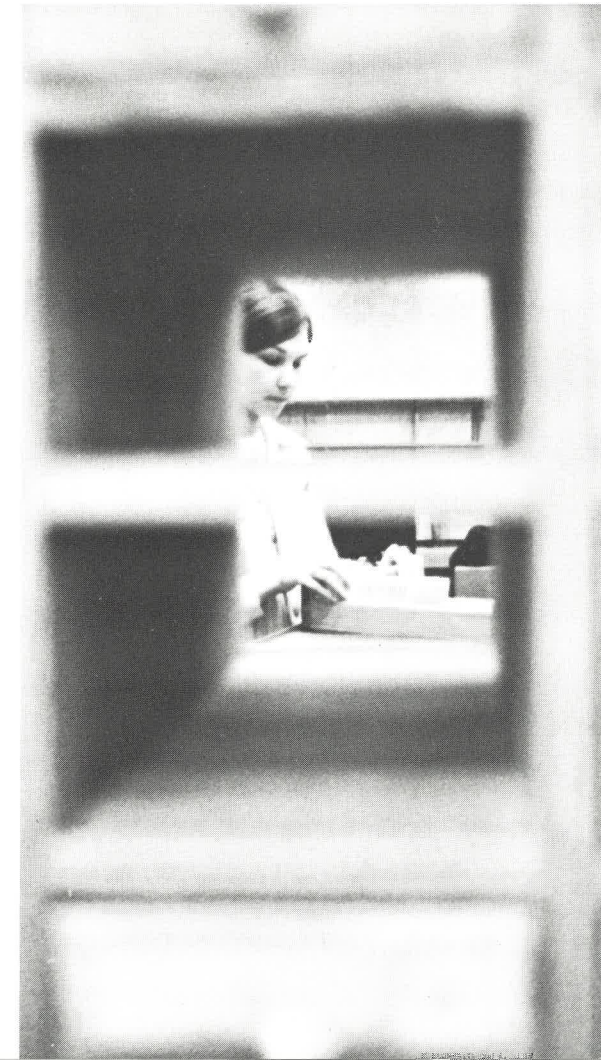




Another dimension in communication—

The Audio-Visual Center.

Librarians direct efforts
that bring resource materials
to students,
where students need them . . .
when students need them . . .
in forms best suited
for
students.





The Card Catalog —

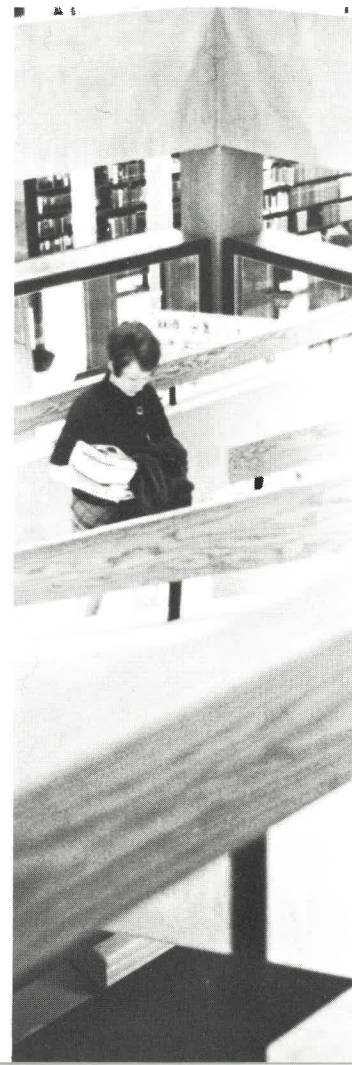
key to the contents of 100,000 volumes.

general references;

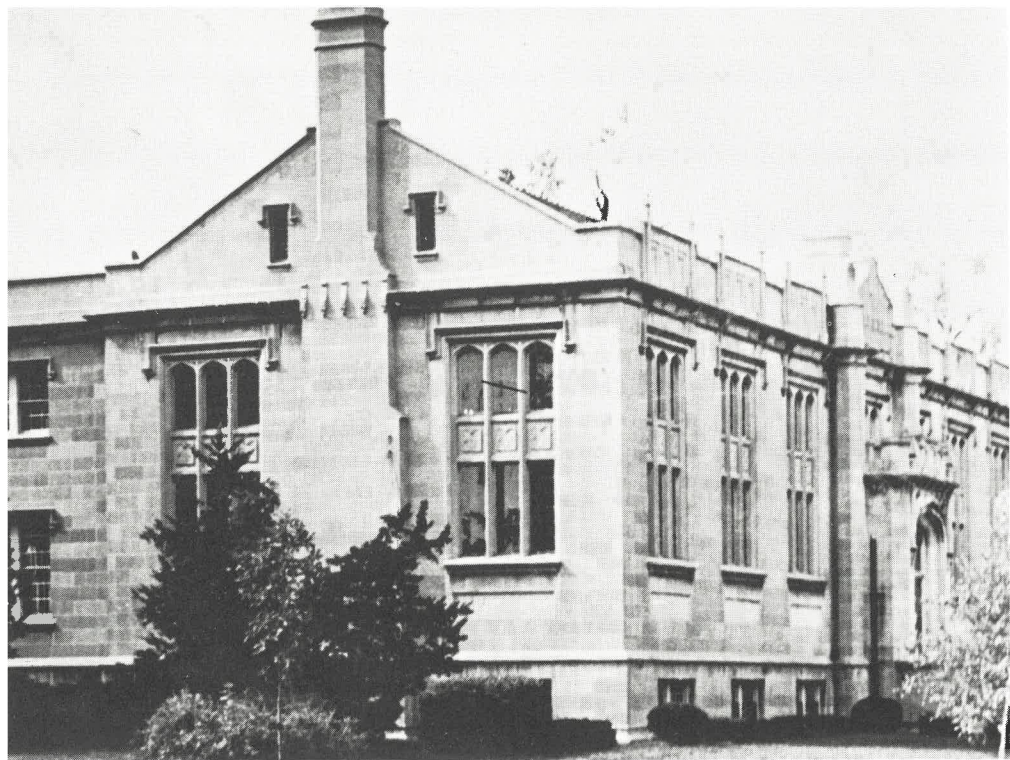
lists of latest acquisitions . . .

all within easy reach, ready for your next move.

It's amazing
how poured concrete,
non-glare glass,
natural red Oak,

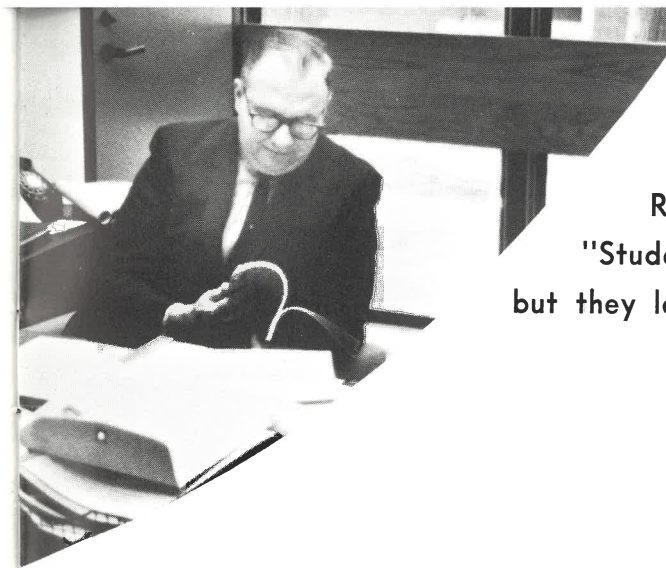


bricks,
and fine carpeting
combine to create
a bracing climate
for learning . . .
Imaginative study
cannot help but
happen here.



Architectural planning keeps apace with the changes.

Most libraries still
Look like this.
But as concepts of
education change,

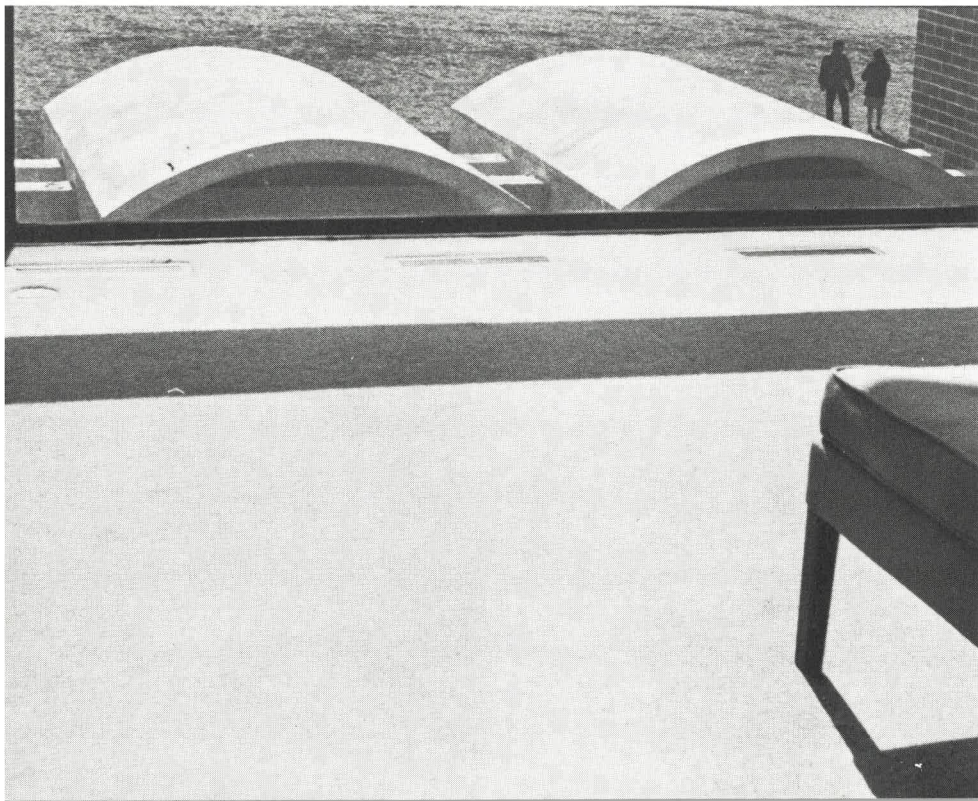


"Education is an individual thing,"
says Illinois Wesleyan Library Director
Rodney Ferguson.
"Students can go to classes,
but they learn alone."

Each student adds by eye and ear
to his past,
stretching his present potential
in his quest
for the future.



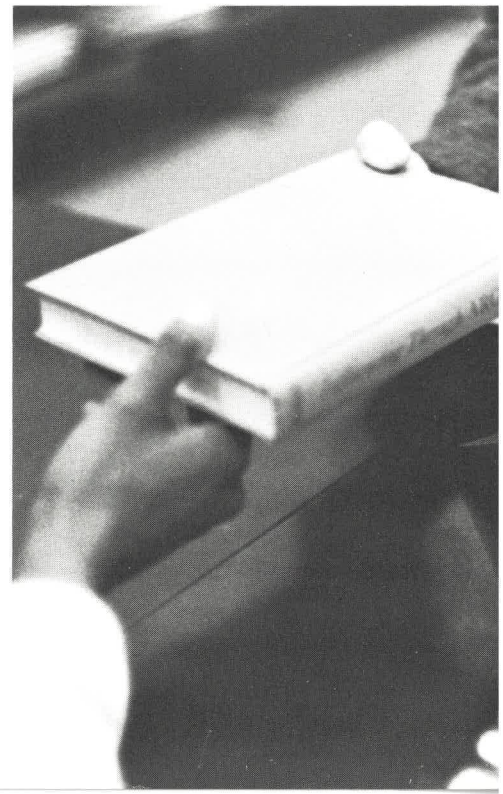
In the time and space of this Library
There is growth.
in all directions



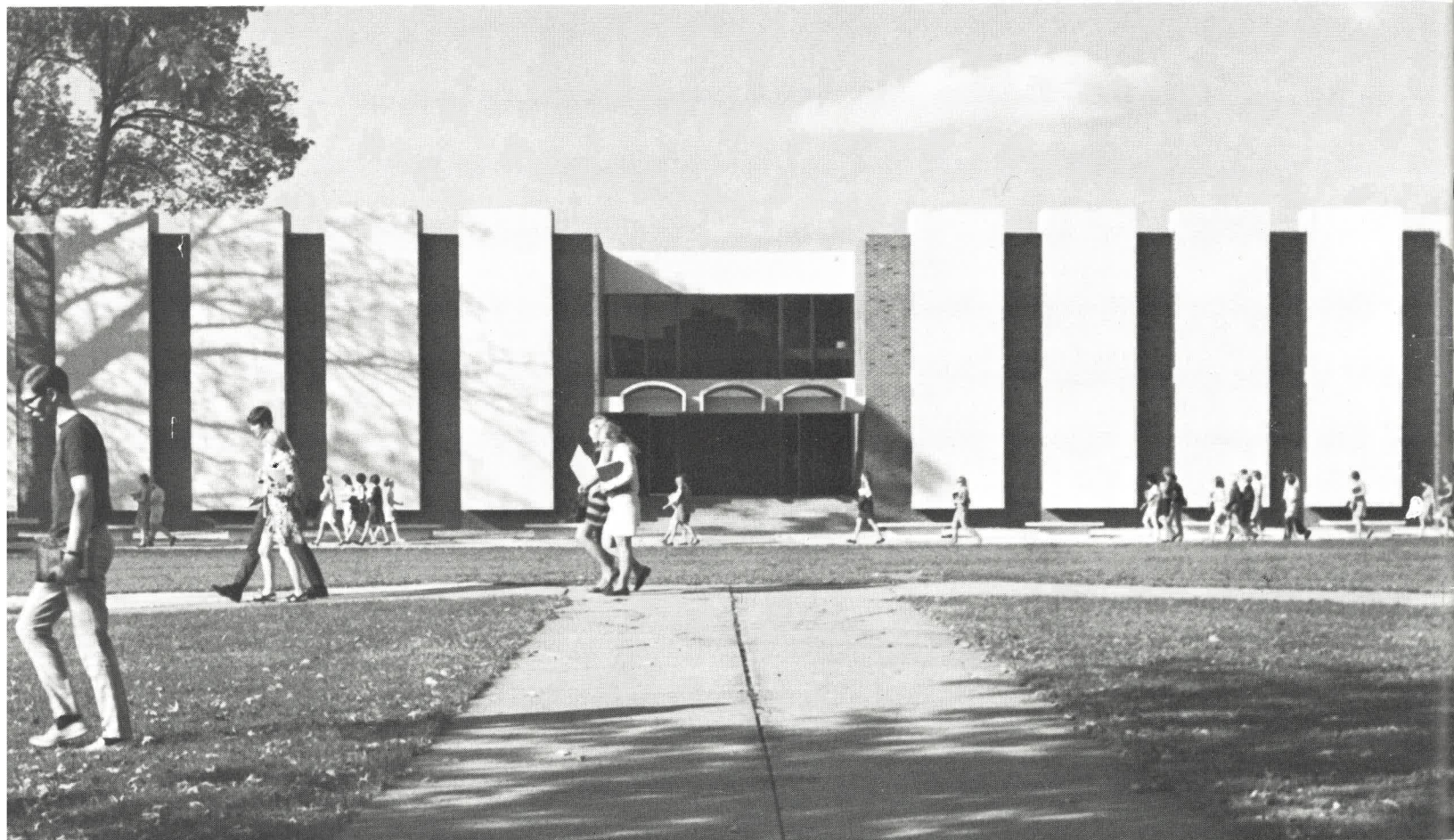
Inward,
outward,
there is a stretching

The Illinois Wesleyan University Library
is a center of Learning in the center of an academic complex.
Here ideas move from mind to mind across the ages;
learning germinates, sprouts, flourishes and comes to full fruition.

Unusual . . .
Accessible . . .
Considerate . . .
That's the Library.



And that's what makes students out of people at Illinois Wesleyan.



Photographs by Lawrence E. Copes, Illinois Wesleyan '69

Illinois Wesleyan University
Bloomington, Illinois 61701



**NON-PROFIT
ORGANIZATION**

U. S. POSTAGE

PAID

Bloomington,
Illinois

Permit No. 30